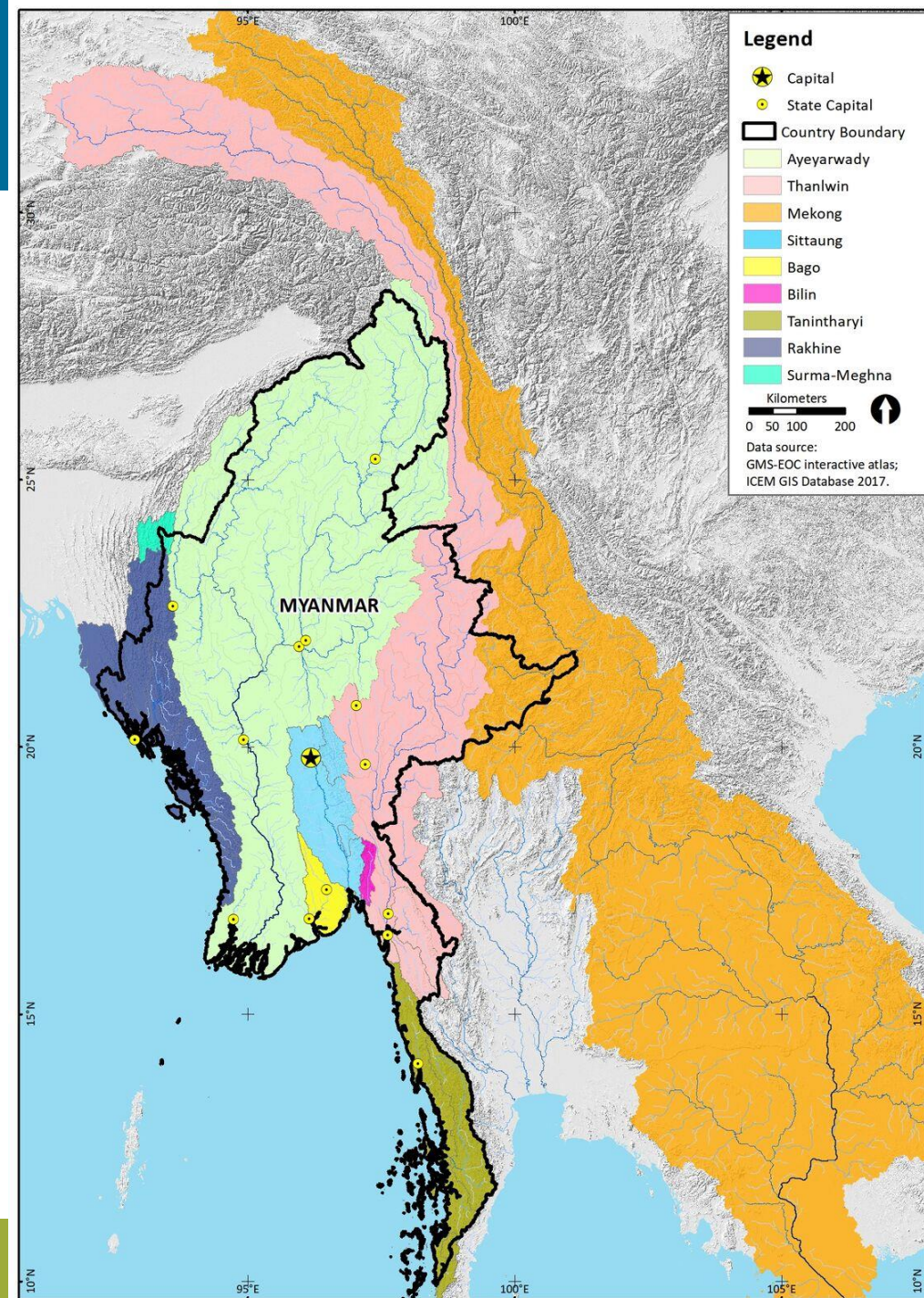


MYANMAR BASINS

- 8 river basins
 - Ayeywarwady – 55% of Myanmar land area
 - Thanlwin – 19%



MAINSTEM RESERVATION

- Strahler Order 4
- Very large average annual flow rate – generally above 1,000 m³/s
- Major river with critical basin processes and functions
 - may also have a notable effect on other areas e.g. floodplain, delta & coastal processes

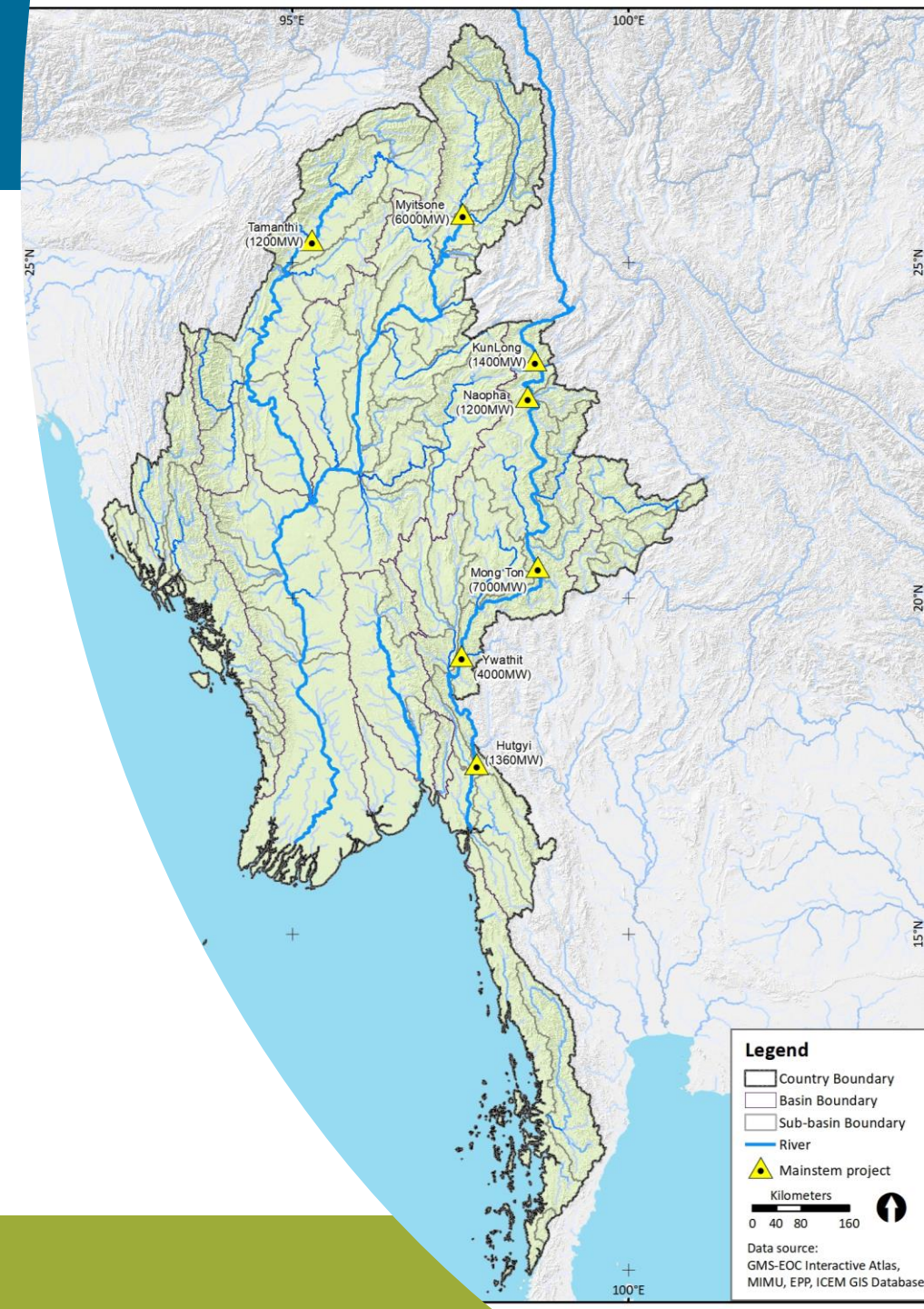
Ayeyarwady - 1,500 km

Chindwin - 900 km

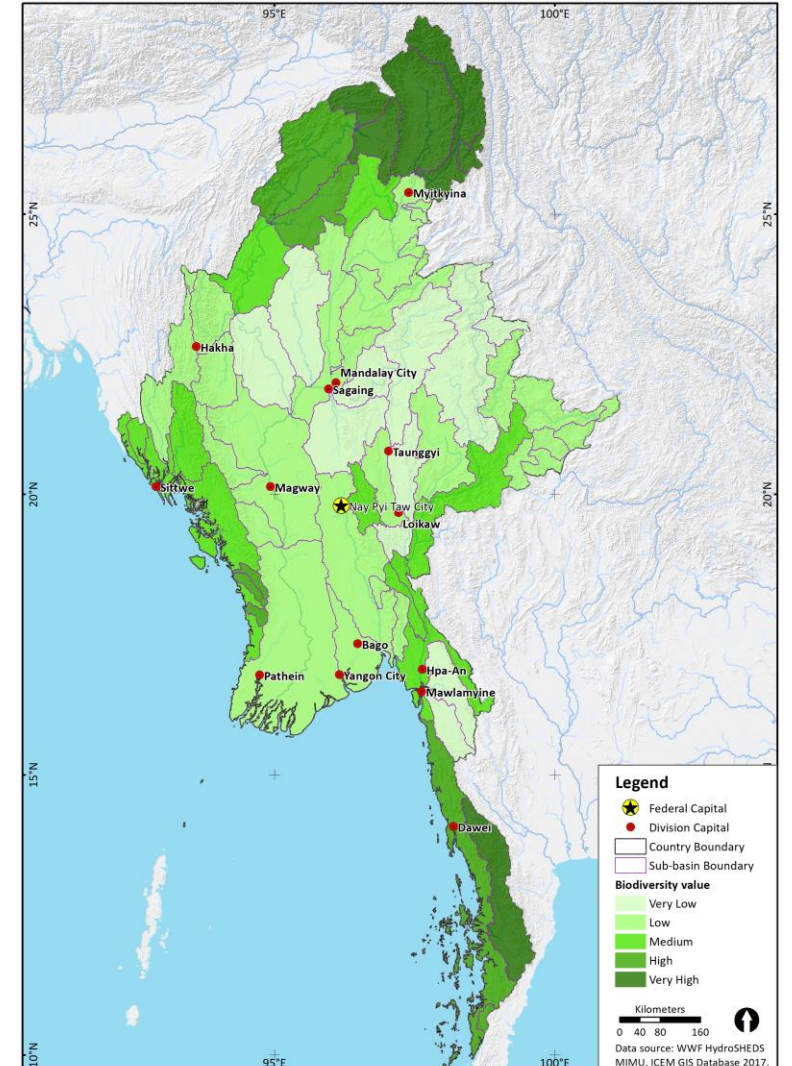
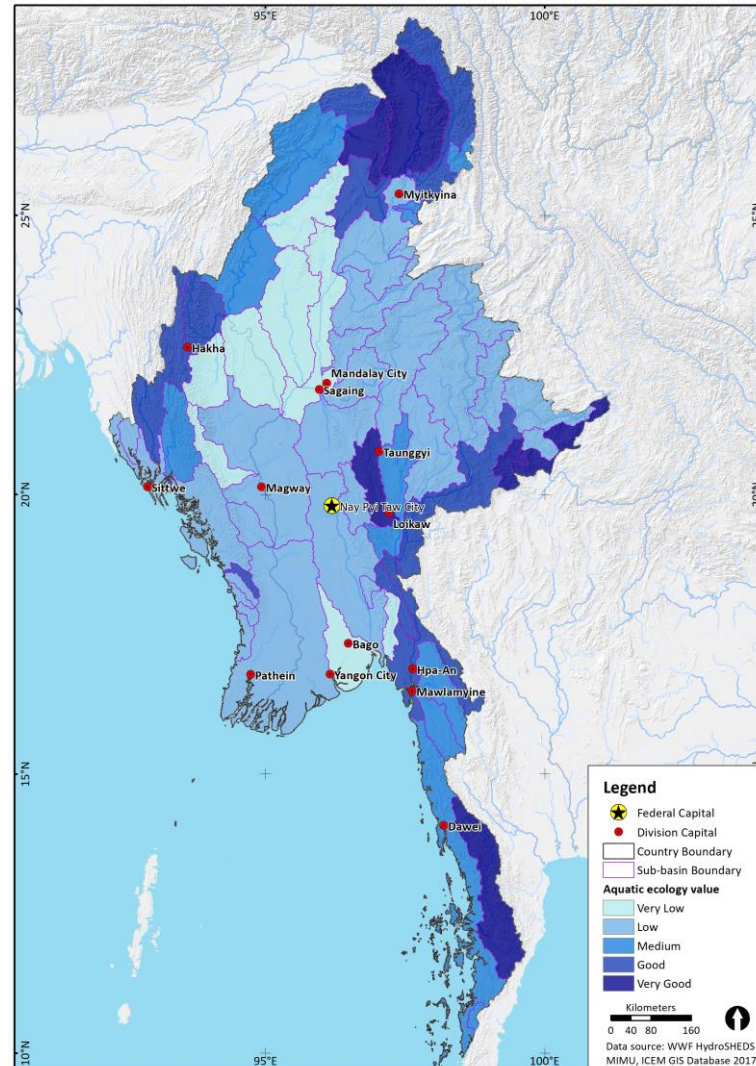
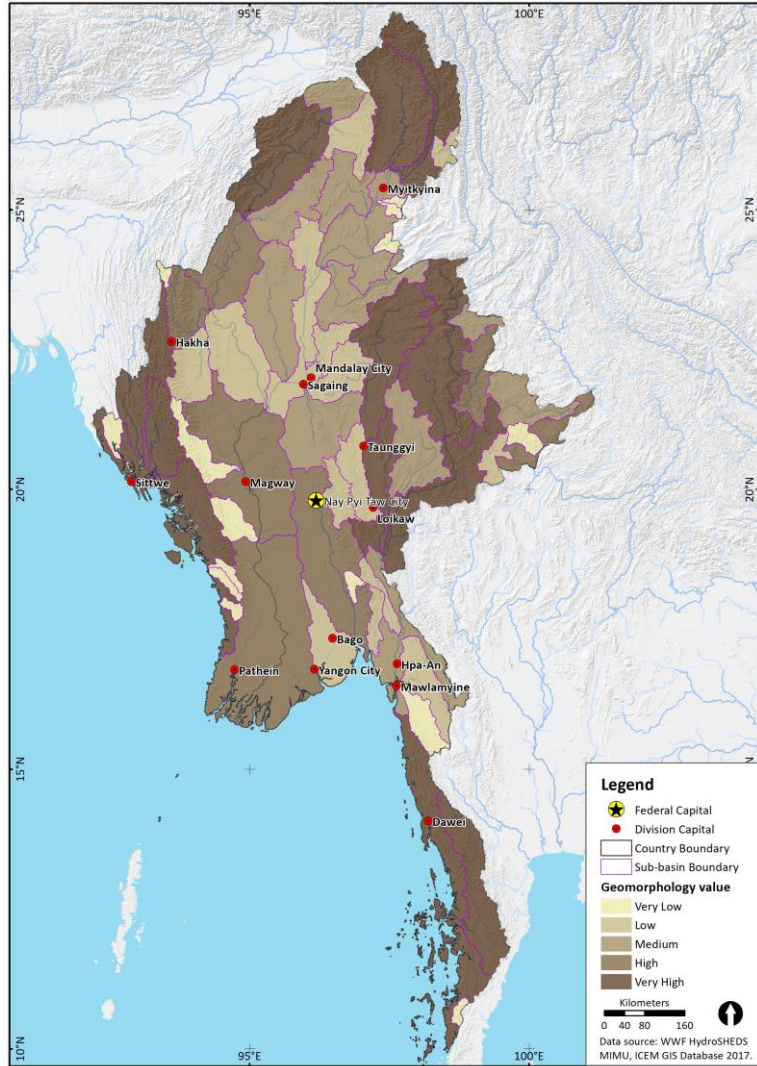
Thanlwin - 1,200 km

Recommendation

- No development of any hydropower projects on mainstems



SUB-BASIN EVALUATION



SUB-BASIN ZONES

'High' zone

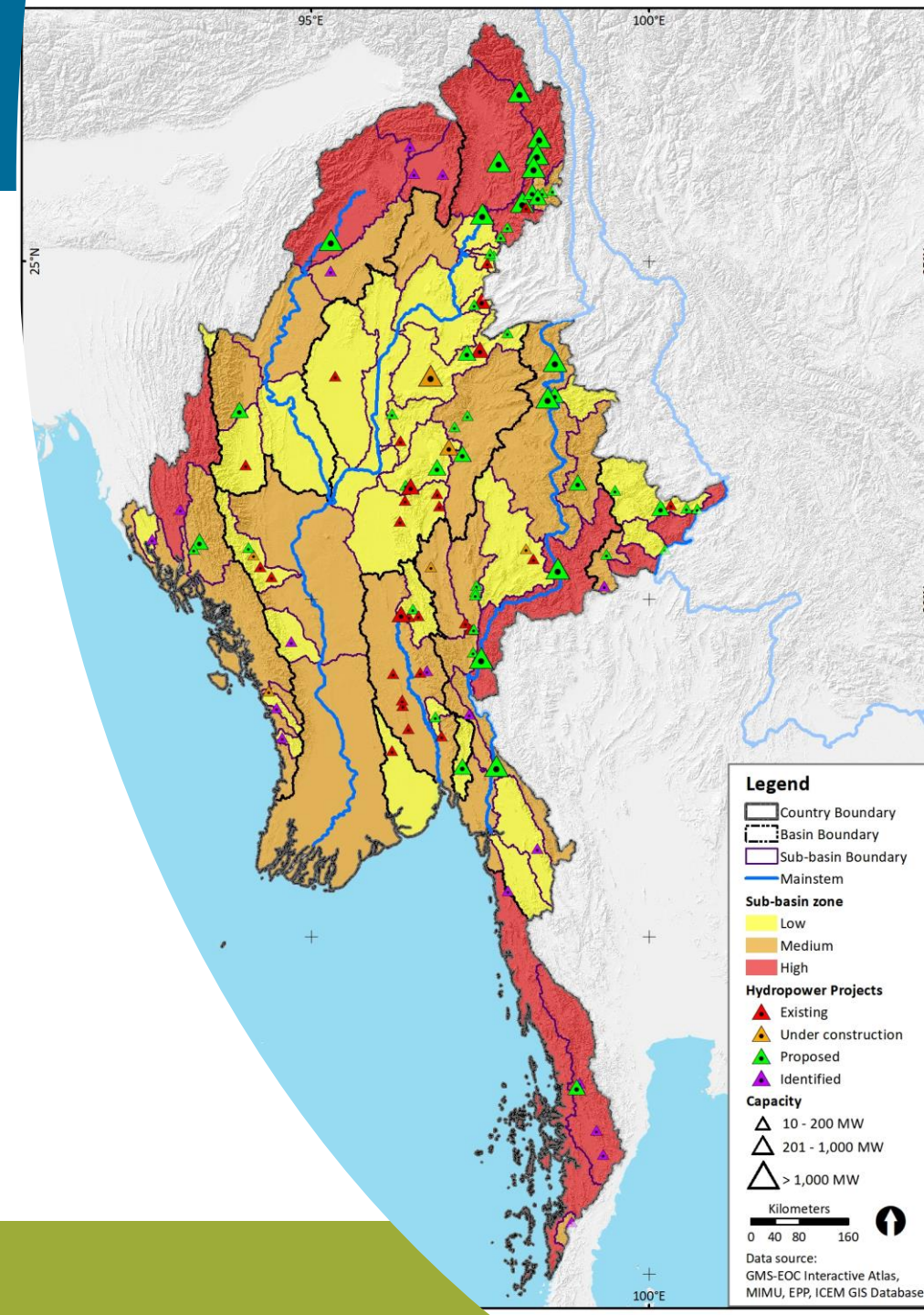
- high conservation value
 - important contribution to basin processes (e.g. high flows, large sediment load) and/or
 - unique natural values for at least two biophysical factors

'Medium' zone

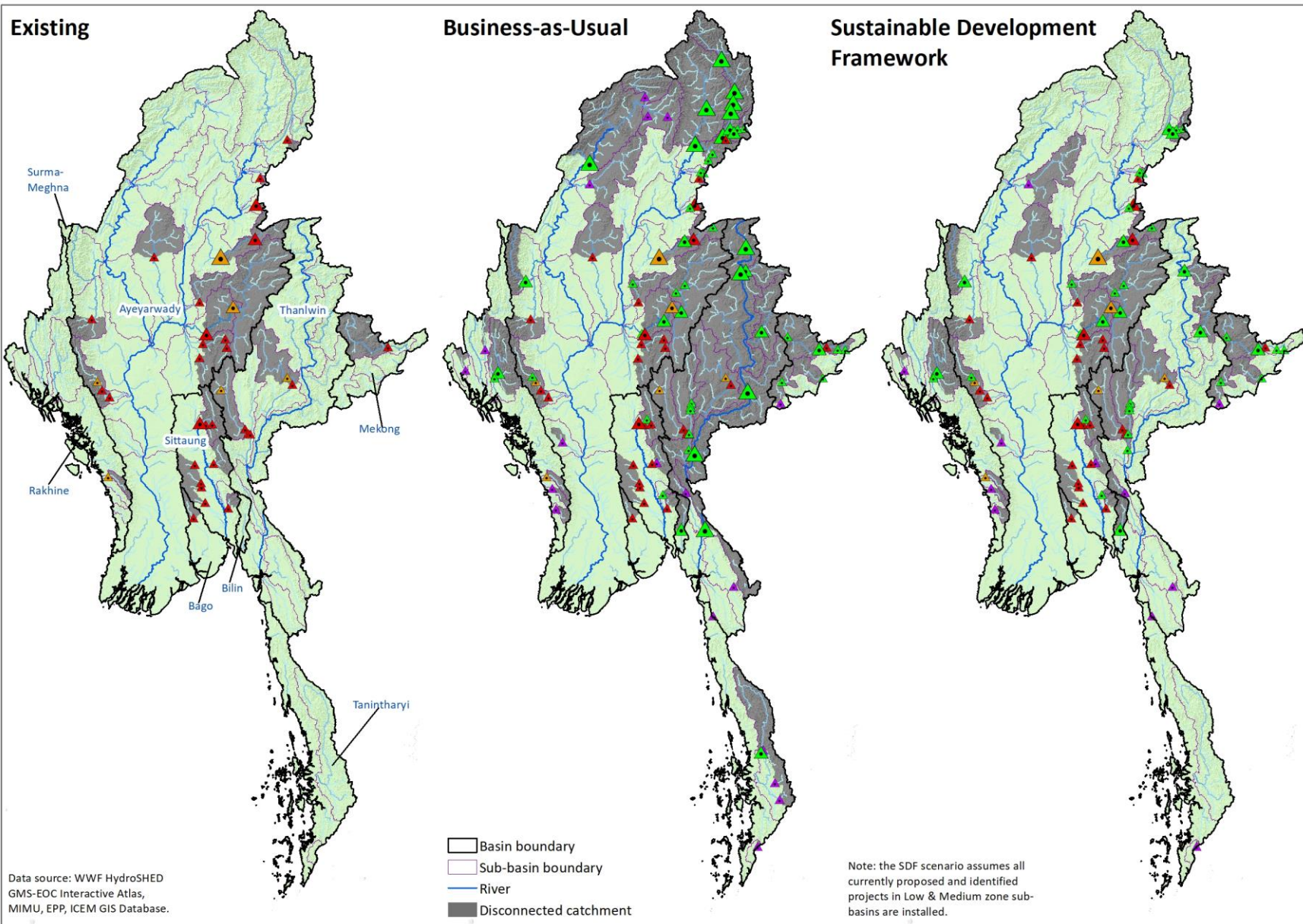
- medium conservation value
 - no high conservation value features over a notable area for two biophysical factors, but
 - may contain notable values for a single factor or pockets of such values

'Low' zone

- low conservation value
 - no high conservation value features over a notable area for any biophysical factor, although
 - may contain pockets of high value



REGULATED CATCHMENT – EXISTING AND INDICATIVE



Further information: search
“Myanmar IFC SEA resource page”